

RH Logic 400/300

24/7 performance



PRIMAT
LOGISTIKA

**DESIGNED
FOR
HUMAN
PERFORMANCE**

DISCOVER WELLBEING WHILE PERFORMING

RH Logic, the ultimate chair in High Performance Ergonomic Seating. Perfect for both remedial and preventative back care solutions, as well as 24/7 applications.

The design challenge

We know for certain that people and companies deliver the best results when they operate in an optimum working environment. We've been in this business a long time and we know how to design and make chairs that work with your body, to help you deliver world class results. We make chairs designed for human performance, especially when you are working exceptionally long hours.

Ergonomics

The RH Logic series is designed to encourage active sitting and upright posture. It keeps you upright, making it easier to breathe, which in turn improves the oxygenation and circulation of your blood. This helps you to feel less fatigued and improves your sharpness. That is why we are confident you will find that the RH Logic Elite is the ideal chair for any demanding working environment such as emergency services, transport control centers, offshore installations and trading rooms.



RH LOGIC 300



RH LOGIC 300
COMFORT



RH LOGIC 300
ELITE



RH LOGIC 400



RH LOGIC 400
ELEGANCE



RH LOGIC 400
ELITE

MARKET SECTORS FOR RH LOGIC 24/7



24 HOUR SURVEILLANCE



FINANCE



EMERGENCY SERVICES



CONTROL ROOMS



ENERGY MANAGEMENT
& PRODUCTION



TOLL BOOTHS



DEALING ROOMS



AIRPORTS



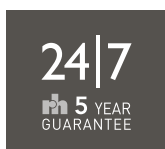
STUDIOS

A CHAIR THAT IS USED ALL DAY LONG NATURALLY NEEDS TO BE EXTRA COMFORTABLE AND DURABLE

RH Logic is optimally designed to help the user perform and feel better during the work day. An RH Chair can easily be adjusted to fit each users unique anatomy.

RH Logic Comfort has a wool layer in the seat and back to enhance ventilation and comfort. RH Logic Elite back and seat has 20 mm extra padding compared to other RH Logic 400/300 chairs. Otherwise the RH Logic Comfomfort and RH Logic Elite chair has the same features as the standard chair.

When you choose a chair from RH, you gain a reliable tool that can be used for many years to come. We set high standards for quality in everything we do. The result is chairs that last a long time.



The guarantee period is 10 years for normal office use, and 5 years for 24/7 use. That is why we are confident you will find that the RH Logic 400/300 is the ideal chair for any demanding working environment. No wonder it is the first choice for high performance organizations around the world, including emergency services, transport control centers, offshore installations and trading rooms.

RH Logic 400/300 range is tested and approved to the EU standard SS EN-1335:2009, and BS-5459: (2000): Part 2.

| | |
|-----------------|---|
| EN 1335 | ✓ |
| IEC 61340 (ESD) | ✓ |
| BS 5459 | ✓ |
| NPR 1813 | |
| ANSI/BIFMA | |
| Möbelfakta | ✓ |
| EPD, ISO 14025 | ✓ |
| Svanemerket | ✓ |
| GREENGUARD | ✓ |





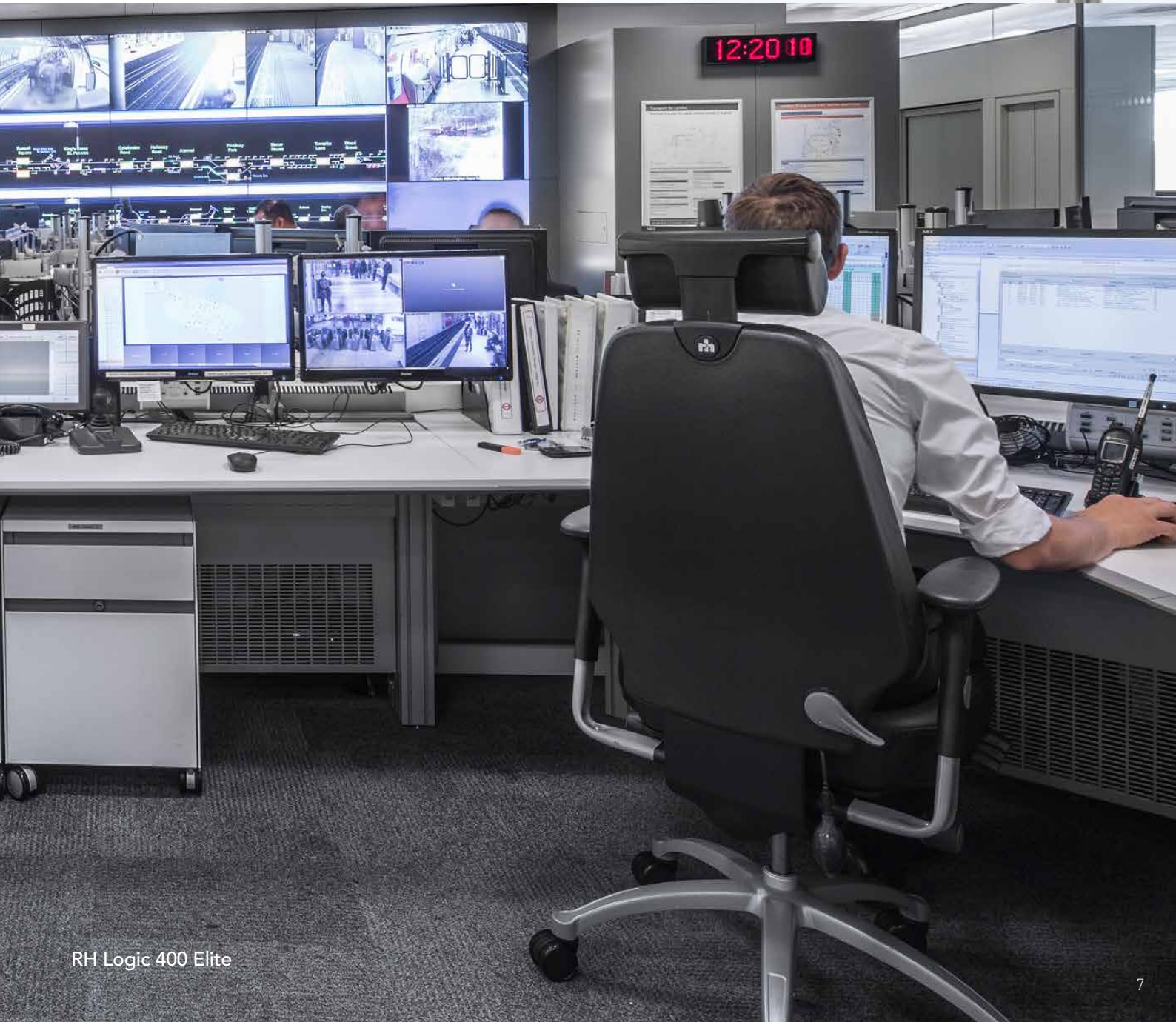
RH Logic 400 Elite XL

UPRIGHT POSTURE
IS NOT ONLY GOOD
FOR THE BODY,
BUT CAN HELP EMPLOYEES
REMAIN ALERT AND
HANDLE WORK EFFICIENTLY



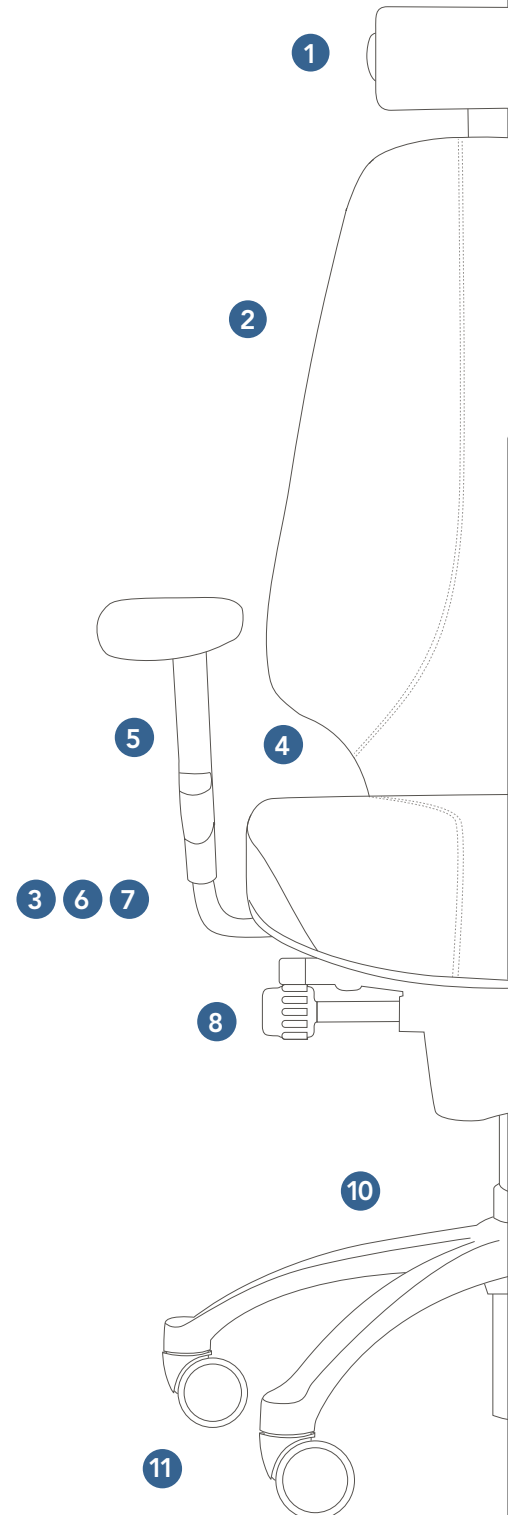
Designed for 24/7 Performance

- Fully adjustable for seat height, back rake angle, back height, seat slide and lumbar support.
- Unique movement principle ensures optimum support and blood circulation during dynamic sitting.
- Exchangeable seat and pack pads to increase longevity and reduce cost of ownership.
- Memory foam and Coccyx cut out seat pads available, as well as 3D armrests.
- 10 year warranty for 9 hour a day usage, 5 year when used as a 24/7 chair.



Functionality

- ① **The headrest**
Is an optional add-on that we highly recommend. It provides support to the neck and thereby relieves the entire body. The headrest is adjustable both in depth and height.
- ② **The backrest**
Choose between high or low back. Tapered back shape allows movement for arms and shoulders. The Tvedt-cushion between the shoulder blades stimulates an open and upright posture for better breathing.
- ③ **The backrest angle**
Can be adjusted separately as needed in order for you to always sit comfortably with good support.
- ④ **The lumbar support**
Provides additional support for the lower back. The pump adjusts the amount of air in a lumbar cushion, providing extra support.
- ⑤ **The armrests**
Two armrest variants are available. Both can be adjusted by height and width, while one can also be adjusted by depth and the other can be rotated 360 degrees.
- ⑥ **The seat**
Available with a layer of wool that provides better ventilation, making the seat 2-3 degrees cooler compared to conventional seats. The seat's waterfall edges reduce pressure on the underside of the thighs, enhancing circulation.
- ⑦ **Seat, height and depth**
Is adjusted by a few simple hand movements. The controls are easy accessible while seated. The correct seat height improves blood circulation in the legs. Correct seat depth provides better relief and better support.
- ⑧ **The tilt mechanism**
Is smooth in its movement, and can be locked in the desired position, allowing the chair to follow your every movement.
- ⑨ **Tilt resistance**
Adjust the tilt resistance according to body weight and length and balance of the chair will be the right one. It allows following your movements without the need to use any muscle power to push the chair into new positions.
- ⑩ **Footbase**
Raised base and curved arms to keep feet firmly on the floor.
- ⑪ **Castors**
Are available in different variants for both hard and soft flooring. power to push the chair into new positions.

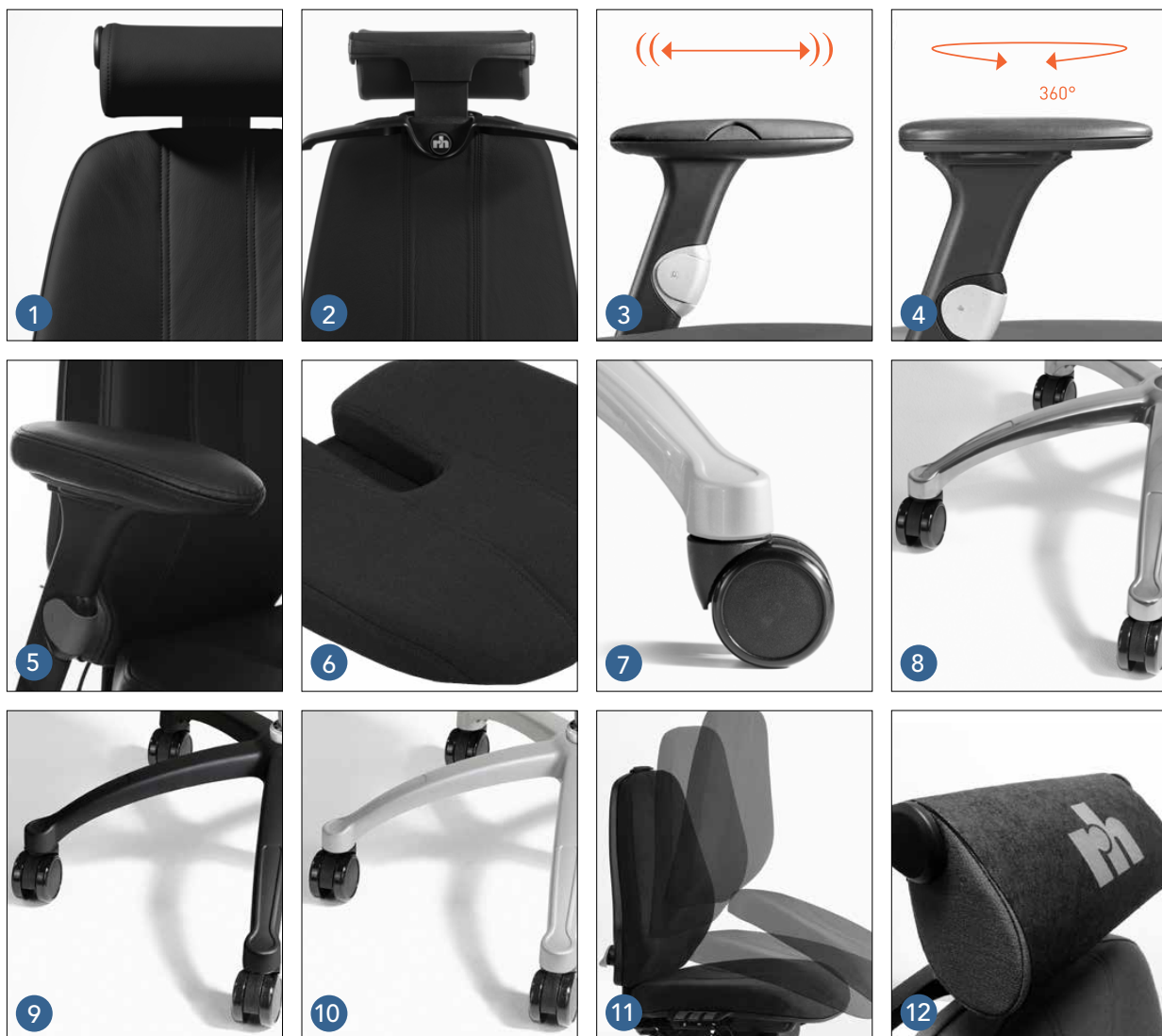




9

Options

For your flexibility, the RH Logic 400/300 offers a generous range of accessories. Naturally, you can also buy the basic chair and add accessories as you need them.



- 1 Neckrest
- 2 Coat-hanger
- 3 Armrest 8E, depth, grey or black
- 4 Armrest 8S, rotating, grey or black

- 5 Armrest 8S XL, rotating, grey or black, extra padding
- 6 Coccyx seat
- 7 Castors for hard floors
- 8 Base 5X, polished aluminium

- 9 Base 5X, black lacquered aluminium
- 10 Base 5X, grey lacquered aluminium
- 11 Exchangeable pads
- 12 Neckrest cover

Different styles for different users



RH LOGIC 400/300

As standard, the RH Logic 400/300 is equipped with castors for soft floors and a graphite aluminium base. Lumbar support is available as an option for RH Logic 300.



RH LOGIC 400/300 COMFORT

As standard, the RH Logic 400/300 Comfort is equipped with extra padding and improved ventilation, castors for soft floors and a graphite aluminium base. Lumbar support is available as an option for RH Logic 300.



RH LOGIC 400/300 ELEGANCE

As standard, the RH Logic 400 Elegance is equipped with upholstered backshell, castors for soft floors and a graphite aluminium base. Lumbar support is available as an option for RH Logic 300.



RH LOGIC 400/300 ELITE

As standard, the RH Logic 400/300 Elite is equipped castors for soft floor, graphite aluminium base and 20 mm extra foam in the seat and back pad. The chair is suited and tested for 24/7 use. Lumbar support is available as an option for RH Logic 300

All our RH Logic 400/300 models are available with XL seat.



by Flokk
flokk.com



PRIMAT
LOGISTIKA