

ACOUSTIC ROOMS



ACOUSTIC



PRIMAT
LOGISTIKA

ACOUSTIC ROOMS

WHAT
YOU





PRIMAT
LOGISTIKA



Silence in every detail, peace and comfort.



PAPL 1

SD Acoustic Rooms offer the fastest way to create individual workspaces in open-plan office environments.



PAPL 2

Thanks to the SD Acoustic Rooms designed in different sizes, you can hold meetings either individually or in Acoustic Rooms for two or four people.



PAPL 4

SD Acoustic Rooms adapt to any office environment with different color options and modern designs.



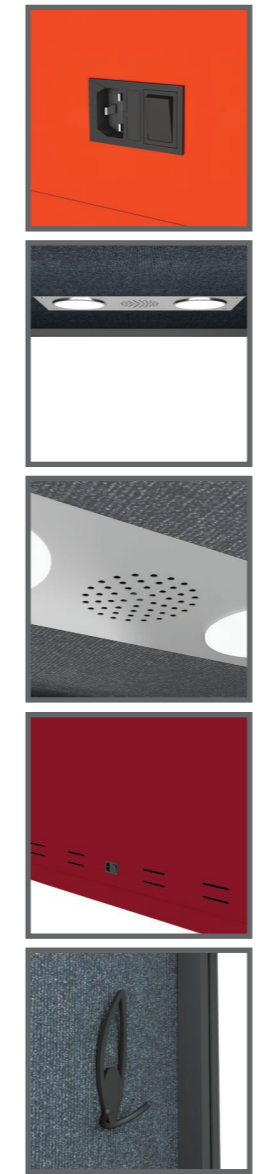
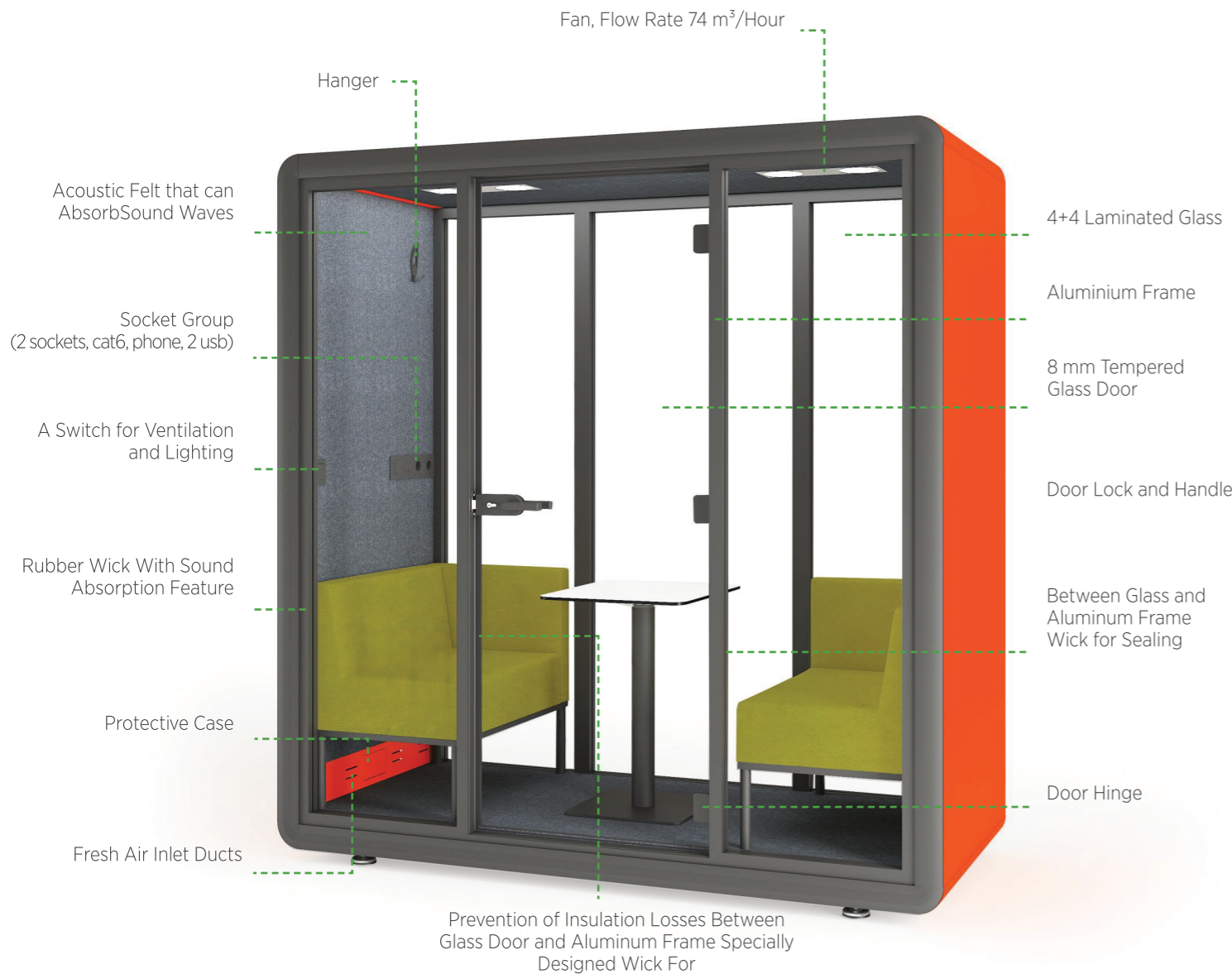
SD Acoustic Rooms create a pleasant atmosphere for meetings with suitable furniture.

Soundproof Layers



- 1-Sheet Steel**
High quality powder coated metal side panels.
- 2-Steel Barrier**
Barriers designed to strengthen the side panels.
- 3-EPDM Sponge**
It has a very good sound insulation performance.
- 4-Empty Space**
According to academic studies, it has been concluded that acoustic products made by leaving an air gap between the layers provide the best acoustic performance at all frequencies.
- 5-Wood Panel**
It is a wooden board with very good mechanical strength.
- 6-Acoustic Foam**
Absorb sound, echo and vibration, High frequency tones up to 80% and low frequency tones completely.
- 7-Acoustic Felt**
With its special acoustic fiber structure, it is extremely resistant to impacts, cracks, dismantling and wear. Its rough surface absorbs the sound waves in the acoustic space.
- 8-Decorative Front Frame**
Decorative front frame made of high-quality electrostatically powder-coated aluminum.
- 9-Protective Cover**
Thanks to the 30 mA leakage current relay in the safety zone, the power supply is automatically interrupted if there is a risk of a leak in the acoustic booth, and safety is guaranteed.
- 10-Air Ducts**

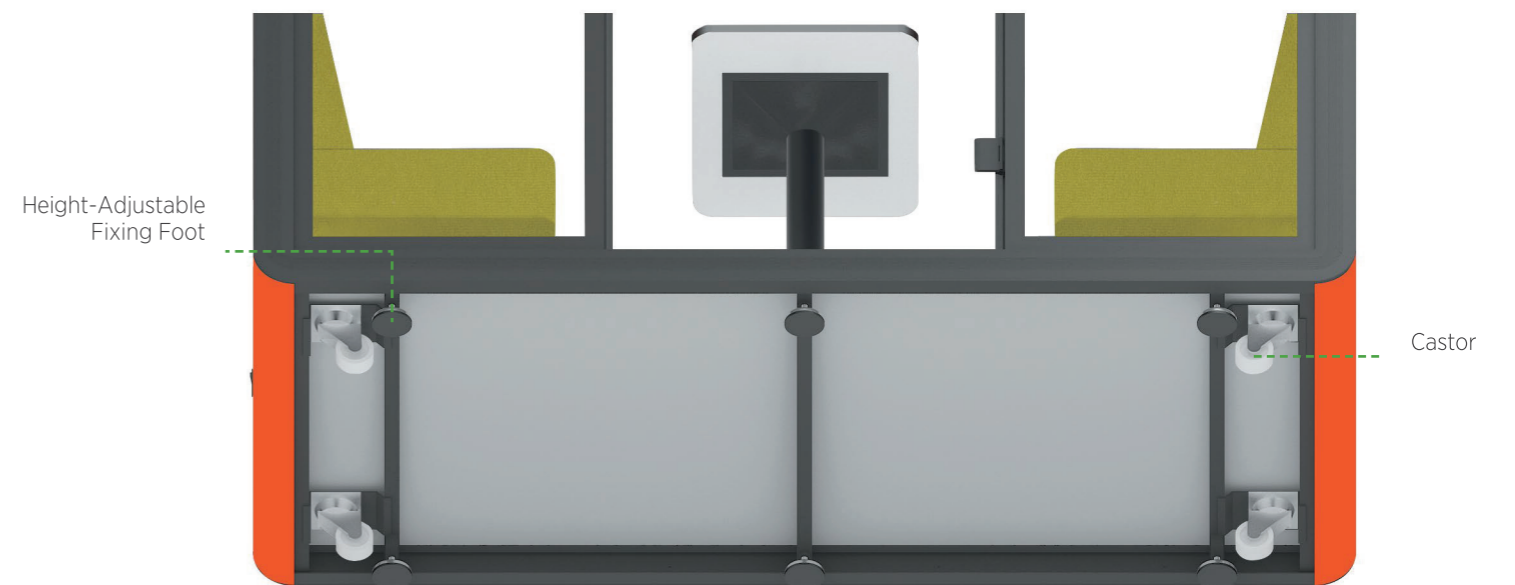
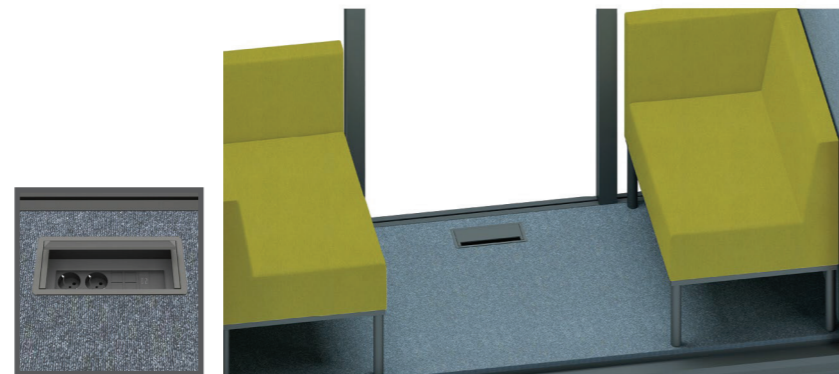
Details



After determining the position of the SD Acoustic Room, it can be fixed with adjustable feet with vibration damping feature. High weight-resistant wheels provide easy displacement.

Optional

If desired, the socket group can be mounted on the floor.



Exterior Colors



RAL 6018 Green



RAL 1013 Cream



RAL 3003 Burgundy



RAL 7021 Anthracite



RAL 2008 Orange

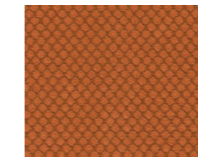
Upholstery Colors

Fabric

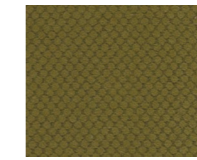
Prime Series



2205
Ocher



2210
Orange



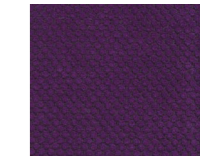
2215
Green



2220
Turquoise



2225
Camel



2230
Violet



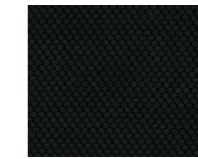
2235
N. Blue



2240
Red



2250
Grey



2255
Black

Drop Series



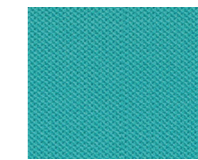
1680
Brown



1687
Orange



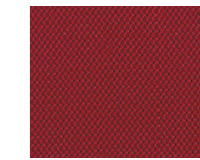
1684
Red



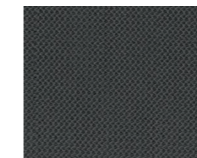
1689
Turquoise



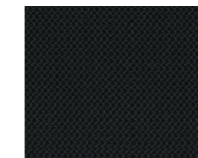
1682
Blue



1688
Burgundy

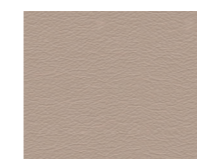


1685
Grey



1686
Black

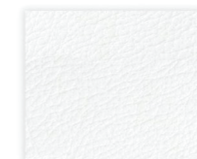
Leather



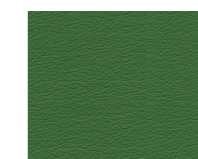
1240
Clay



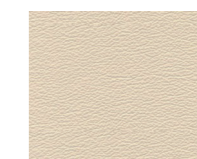
1505
Turquoise



6096
White



1510
Dark Green



1220
Bej



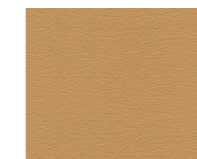
6136
Green



6125
Red



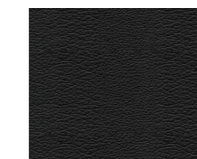
6080
Blue



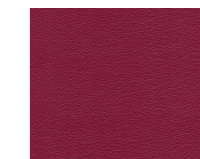
6150
Camel



6170
Orange



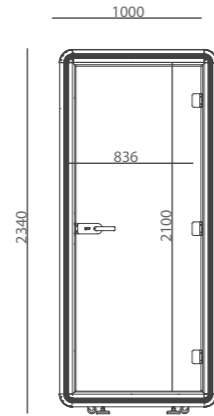
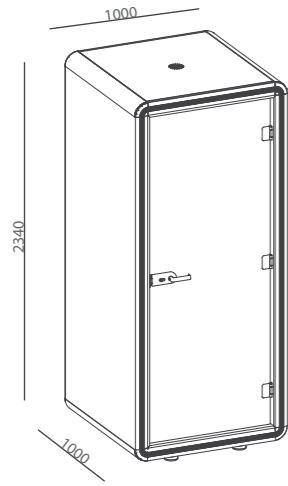
6105
Black



6146
Burgundy

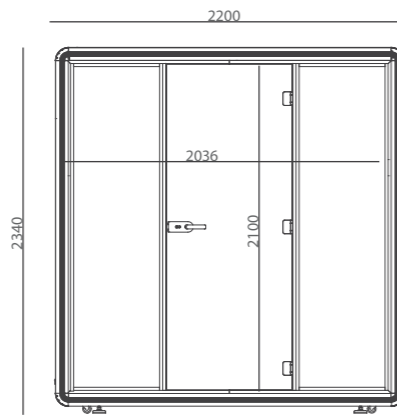
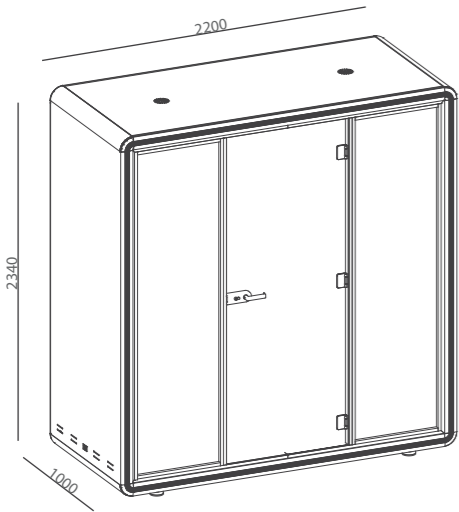
Dimensions

PAPL 1



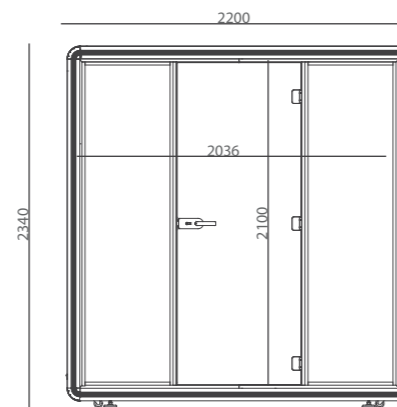
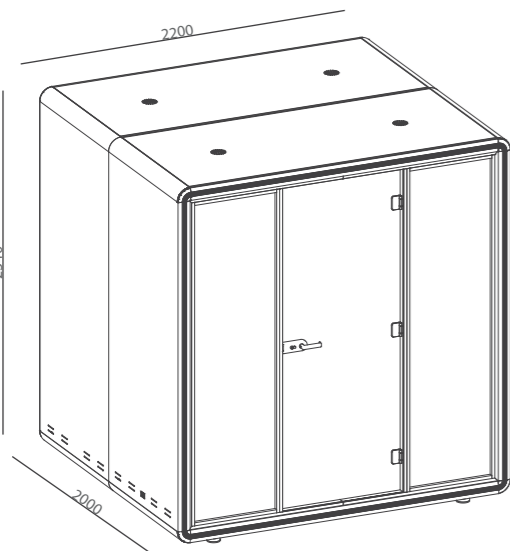
For 1 Person
 2x9W 620 lm low electricity consumption led spotlight
 1 fans

PAPL 2



For 2 Persons
 4x9W 620 lm low electricity consumption led spotlight
 2 fans

PAPL 4



For 4 Persons
 8x9W 620 lm low electricity consumption led spotlight
 2 fans

Technical Specifications

	Internal Width(mm)	Depth (mm)	Height(mm)
For 1 Person	1000	1000	2340
For 2 Person	2200	1000	2340
For 4 Person	2200	2000	2340

	Internal Width(mm)	Internal Depth(mm)	Internal Height(mm)
For 1 Person	836	852	2100
For 2 Person	2036	852	2100
For 4 Person	2036	1824	2100

Struktur

Lacquered side panels made of reinforced sheet metal, coated with high quality electrostatic powder
 Electrostatically powder-coated aluminum profile acoustic cabin frame 80 mm wide 4 + 4 laminated glass with aluminum frames at the front and rear
 Glass door 8mm hardened impact resistant
 Lower and upper frame reinforced with steel profiles
 Weight-resistant lower wheels make it easier to move the acoustic cabin
 The inner surfaces of the cabins are covered with acoustic felts, extremely resistant to impacts, cracks, sound absorption is ideal

Electrical System

3 m long with plug so that the system can be easily connected to the office electrical system
 Main switch and AC power input socket with fuse
 30 mAH leakage current relay which automatically cuts the electricity to the acoustic cabinet in the event of an electrical leak and prevents possible dangers
 2x9W 620 lm low electricity consumption led spotlight for single room
 4x9W 620 lm low electricity consumption led spotlight for double room
 8x9W 620 lm low electricity consumption led spotlight for quadruple room
 2 sockets, 1 cat6 socket, 1 telephone socket, 2 USB port and 1 switch for lighting and ventilation system

Ventilation System

Quiet fan with an air flow rate of 74 m³/hour
 1 fan in the cabin for one person
 2 fans in the double cabin
 2 fans in the four-compartment cabin
 The fans are activated by the switch

Sound Insulation

During the measurements of the National Metrology Institute TÜBİTAK according to ISO 23351-1, the speech attenuation value was measured with 32 dB and the D_{S,A} value with 20,8 dB at a frequency of 8000 hz.